



CIMSPA COACH REGISTER



A photograph of four children on a beach, all wearing wetsuits and holding surfboards. The child on the far left is wearing a blue wetsuit with a logo. The child next to them is wearing a yellow wetsuit. The child in the center is wearing a white wetsuit with a blue logo and is smiling broadly. The child on the far right is wearing an orange wetsuit with a logo. In the background, another person in a blue wetsuit is visible. The text 'AN ASSURANCE FRAMEWORK for COACHING IN ENGLAND' is overlaid on the left side of the image in a white, outlined font.

AN
ASSURANCE
FRAMEWORK
for
COACHING
IN
ENGLAND



SURFING
ENGLAND

BACKGROUND

CIMSPA

CIMSPA stands for the *Chartered Institute for the Management of Sport and Physical Activity*.

It is the **professional development and regulatory body** for the UK's sport, exercise, and physical activity workforce — including coaches, trainers, instructors, and related professionals. It was formed by Royal Charter and exists to support, standardise and recognise professionals working in this sector.



BACKGROUND

WHY A REGISTER?

The CIMPSA coaching register is a strategic drive to professionalise, regulate, and standardise the UK sport and physical activity workforce.

It will provide a single point of reference at which members of the public and organisations can check that a coach is:

- **Qualified** and
- **Safe**
 - has no safeguarding debarments
 - has not been expelled from **any** sports governing body for any other reasons

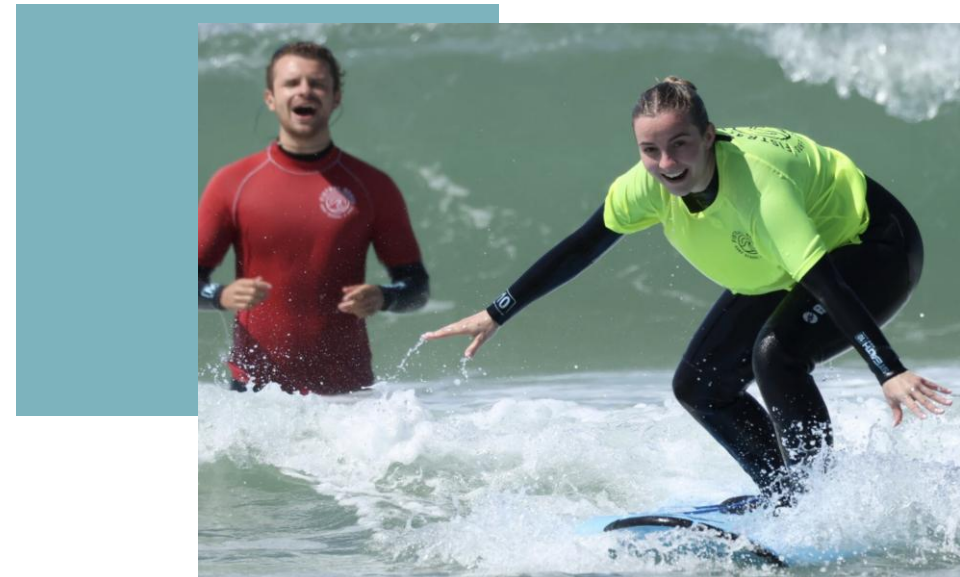
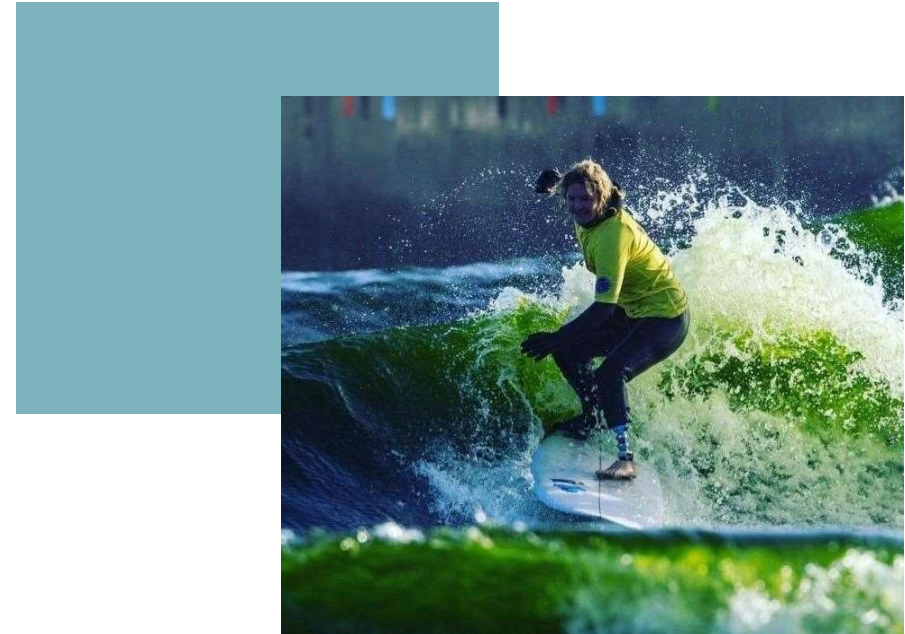


BACKGROUND

FORMATION OF CIMSPA

CIMSPA was formed in 2011 from the merger of the Institute of Sport and Recreation Management (ISRM) and the Institute for Sport, Parks and Leisure (ISPAL). It was awarded Chartered Status in 2012 by the Privy Council, **becoming the recognized professional body for the sector.**

Workforce Governance Project (2019–Present): Following "Towards an Active Nation" and "Uniting the Movement" strategies, CIMSPA began working with Sport England and UK Sport to establish a sector-wide approach to governance. **This initiative was designed to ensure that coaches are qualified, insured, and adhering to safety standards.**



BACKGROUND

FORMATION OF CIMSPA

The "Whyte Review" Response: The development of the register gained further momentum as part of the response to the Whyte Review, aiming to protect participants from harm and promote safe, high-quality experiences.

Merging of Registers (2020): In February 2020, CIMSPA and UK Coaching announced an agreement to merge the Register of Exercise Professionals (REPs) with the CIMSPA Exercise and Fitness Directory, creating a single, comprehensive directory for professionals.

Phased Implementation: The project has moved through phases (Phase 3 currently, as of 2025) which focus on workforce evaluation, setting professional standards, and auditing.



What is the aim of the register

Provide a single directory for exercise and coaching professionals – no more separate registers, reducing confusion for employers and the public.

Standardise professional recognition – membership signifies an individual has met clear, sector-agreed standards of qualification and continuing professional development (CPD).

Support career development and professional status – CIMSPA membership can lead to recognised professional status and, for some, chartered recognition within the sport/physical activity profession.

Align with broader workforce development strategies – the change also supported Sport England's and government strategies to professionalise the workforce delivering sport and physical activity across the UK.



What does this mean to surfing in England

From **2028** It will be **mandatory** to be on the register to coach **any** sport in England.

CIMPSA have delegated NGB's (Surfing England) to run and manage the registration process

All NGB's have been similarly charged

To ensure consistent quality and standards Coaches must hold the NGB recognised qualification for Surfing in England this is a minimum of SE1



How can you move to SE qualification

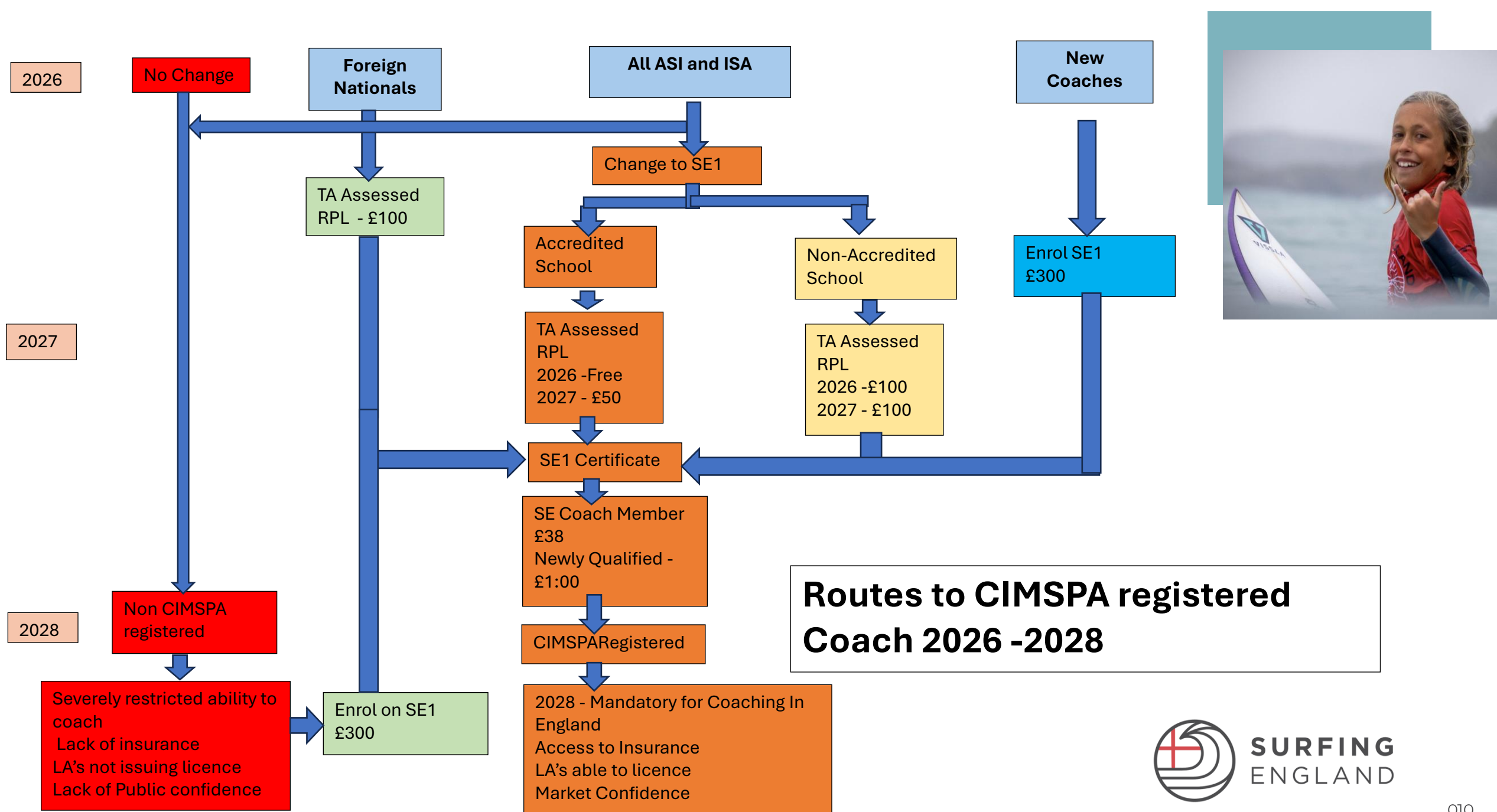
We have tried to make the transition from ISA, ASI, qualified, Foreign National Coaches and New Coaches as easy and inexpensive as possible

We are recognising Prior Learning which will be assessed by our training assessors through a single assessed session. If this is through an Affiliated SE school in 2026 this will be **free** and in 2027 it will just £50

Through a Non-SE affiliated school in 2026 and 2027 the TA Assessed RPL will be £100

This is illustrated on the next slide





Any Questions



Professional
Standards are
the sector's

Golden Rules



SURFING
ENGLAND

<https://cimspa.co.uk/our-work/workforce-governance/>