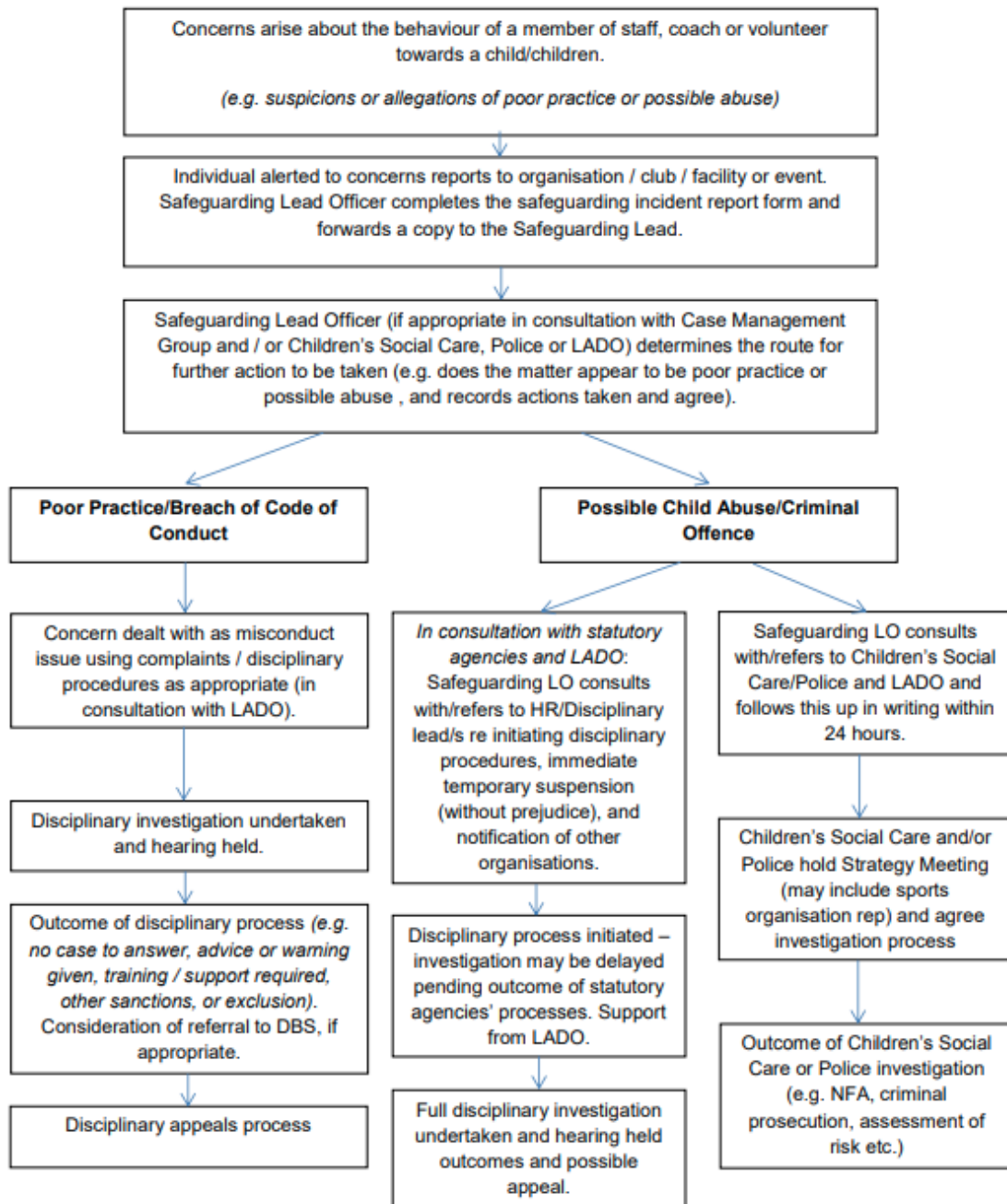


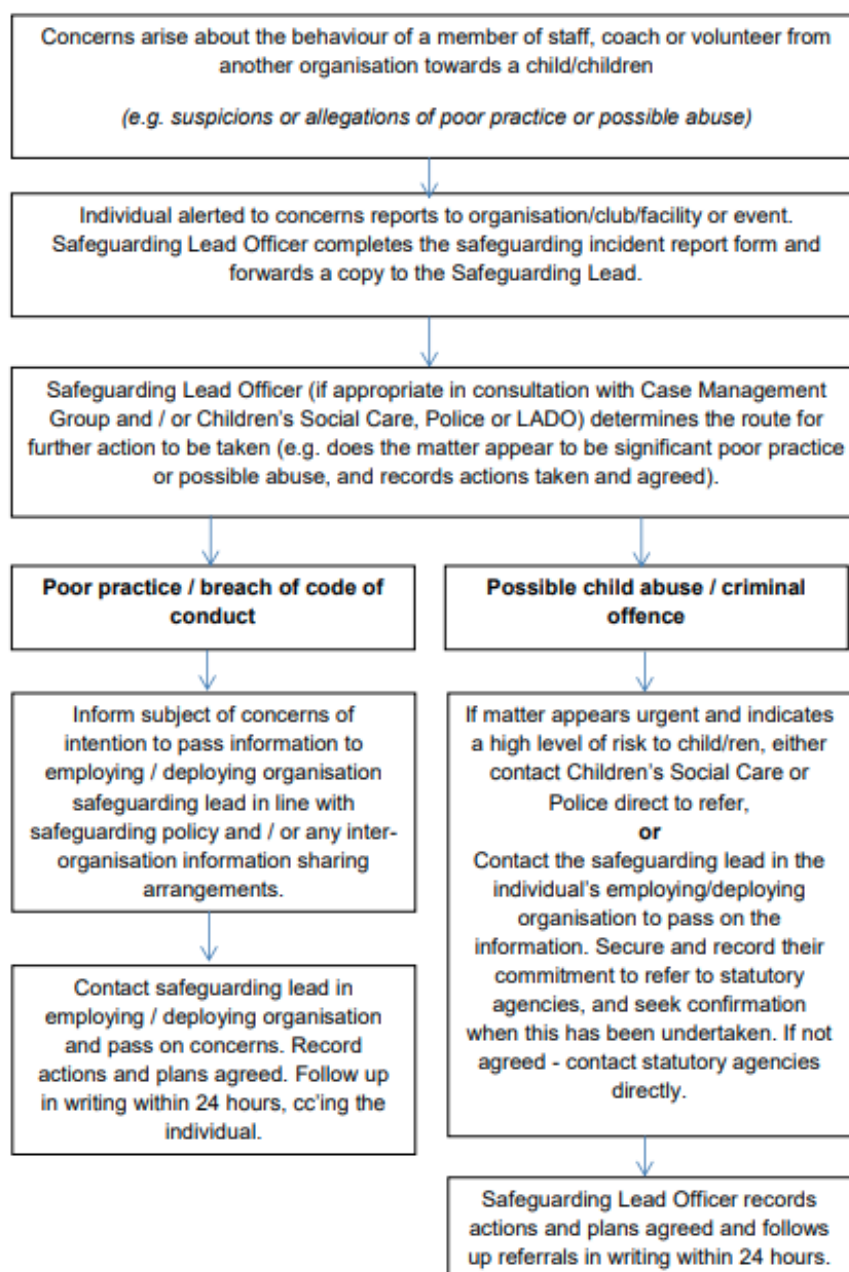
## Outline safeguarding reporting procedure concerns

### 1. About the behaviour of the organisation's staff member or volunteer (e.g. allegation about a coach or officer's behaviour towards a child)



## Outline safeguarding reporting procedure concerns

### 2. About the behaviour of another organisation's staff member or volunteer (e.g. allegations reported about an individual working for a partner organisation)



## Outline safeguarding reporting procedure concerns

### 3. About children and young people arising outside of sport (e.g. at home, school or in the community)

